



Certificate of Analysis

Sample: M001117014-001

Harvest/Lot ID: 1

Seed to Sale# N/A

Batch Date: 11/11/20

Batch#: 004

Sample Size Received: 10 gram

Total Weight/Volume: N/A

Retail Product Size: 1000 gram

Ordered: 11/13/20

sampled: 11/13/20

Completed: 11/23/20 Expires: 11/23/21

Sampling Method: SOP Client Method

Nov 23, 2020 | VapenKY

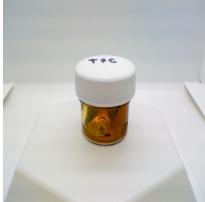
710 Kentucky Ave
Fulton, KY, 42041, US



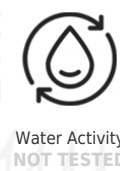
PASSED

Page 1 of 1

PRODUCT IMAGE



SAFETY RESULTS



MISC.

CANNABINOID RESULTS



Total THC
0.000%



Total CBD
98.279%



Total Cannabinoids
99.158%

	D9-THC	TOTAL CANN	THCA	CBD	CBDA	DB-THC	THCV	CBN	CBDV	CBC	CBG	CBGA	TOTAL CBD	TOTAL THC
%	ND	99.1580	ND	98.2790	ND	ND	ND	ND	0.5470	ND	0.3320	ND	98.2790	ND
mg/g	ND	991.580	ND	982.7900	ND	ND	ND	ND	5.4700	ND	3.3200	ND	982.790	ND
LOD	0.0001	0.0010	0.0010	0.0001	0.0010	0.0010	0.0010	0.0010	0.0010	0.0010	0.0010	0.0010	0.0100	0.1000
%	%	%	%	%	%	%	%	%	%	%	%	%	%	%

Filtration PASSED

Analyzed By	Weight	Extraction date	Extracted By
564	NA	NA	NA
Analyte			LOD
Filtration and Foreign Material			0.3
Analysis Method -SOP.T.40.013		Batch Date :	
Analytical Batch -NA		Reviewed On -	11/23/20 16:05:16
Instrument Used :			
Running On :			

This includes but is not limited to hair, insects, feces, packaging contaminants, and manufacturing waste and by-products. An SH-28/T Stereo Microscope is used for inspection.

Cannabinoid Profile Test

Analyzed by	Weight	Extraction date :	Extracted By :
19	0.1025g	NA	NA
Analysis Method -SOP.T.40.020, SOP.T.30.050		Reviewed On - 11/23/20 16:08:37	Batch Date : 11/17/20 15:57:12
Analytical Batch -M0001420PDT	Instrument Used : HPLC Potency Analyzer	Running On :	
Reagent	Dilution	Consums. ID	

Full spectrum cannabinoid analysis utilizing High Performance Liquid Chromatography with UV detection (HPLC-UV). (Method: SOP.T.30.050 for sample prep and Shimadzu High Sensitivity Method SOP.T.40.020 for analysis. LOQ for all cannabinoids is 1 mg/L). Measurement of Uncertainty: 2.7%

This report shall not be reproduced, unless in its entirety, without written approval from Universal Diagnostic Labs. This report is an Universal Diagnostic Labs certification. The results relate only to the material or product analyzed. Test results are confidential unless explicitly waived otherwise. Void after 1 year from test end date. Cannabinoid content of batch material may vary depending on sampling error. IC=In-control QC parameter, NC=Non-controlled QC parameter, ND=Not Detected, NA=Not Analyzed, ppm=Parts Per Million, ppb=Parts Per Billion. Limit of Detection (LoD) and Limit Of Quantitation (LoQ) are terms used to describe the smallest concentration that can be reliably measured by an analytical procedure. RPD=Reproducibility of two measurements. Action Levels are State determined thresholds for human safety for consumption and/or inhalation. The result >99% are variable based on uncertainty of measurement (UM) for the analyte. The UM error is available from the lab upon request. The "Decision Rule" for the pass/fail does not include the UM. The limits are based on F.S. Rule 64-4.310.

David Greene
Lab Director

State License # 19-05-02P
ISO Accreditation # .

Signature
Signature

11/23/20

Signed On